



African Casino Equipment Suppliers

Innovative Trusted Secure Professional Solutions



Leaders in Cashless Gaming

ACES AFRICA
SYSTEM OVERVIEW



African Casino Equipment Suppliers

The ACE Gaming Management System is a suite of software modules designed to configure, maintain and manage gaming operations and coinless information across the gaming venue.

Ease of use is top priority for ACE providing functionality that enhances a customer's gaming experience while providing live interaction with reports and gaming statistics.

The system has been designed to collect, update, maintain and summarise daily gaming information automatically, promptly and effectively from varied sources such as electronic gaming machines, live table games and client terminals.

The Gaming Management suite is configurable meeting venue specific requirements from Arcades to Casinos supporting both tables and slots gaming.

The system can be configured for a total CASHLESS gaming floor, where cash assets are physically housed exclusively in the Vault cum Cashdesks to Coinless operations, where soft count functionality is required.

-  ACE
-  ACE System Help
-  Back Office Admin
-  Card Manager
-  Cash Desk
-  Event Browser
-  Fingerprint Test
-  Jackpot Enquiry
-  Jackpot Links 6000
-  Jackpot Music
-  Machine Manager
-  Membership Monitor
-  Membership
-  PitControl
-  Redemption
-  Remote Report Login
-  Reports
-  Slot Shift Desk
-  Slot Short Manager
-  Slot Short Station
-  Soft Count

A unique and important aspect of the ACE system is that it records every single transaction, including each game played, as opposed to the commonly adopted approach of only recording sessional history between card-in and card-out. This has proved invaluable not only in resolving customer disputes over cashless transactions, but also game result disputes. This has enabled our customers to realise better customer and regulatory relationships.



African Casino Equipment Suppliers

SECURITY

Security of the ACE product offering is controlled biometrically, therefore all users have to scan their fingers to authorise functionality or to access modules. Keeping with Best Practice functionality users belong to User Groups. Permissions and Authorisations are maintained and administered against the User Group making for easier and manageable security control.

BENEFITS

Coinless & Cashless Gaming has proven to be extremely effective in driving higher profits for casino operators. Much tighter control is provided over the casino assets and the property no longer requires the additional equipment and manpower required to handle and account for coin and tokens. Staff who are normally involved in doing time consuming tasks such as completing jackpots and machine refills are now available to service guests.

With reduced cost and higher patron satisfaction growths in profitability can be realised.

FOOTPRINT

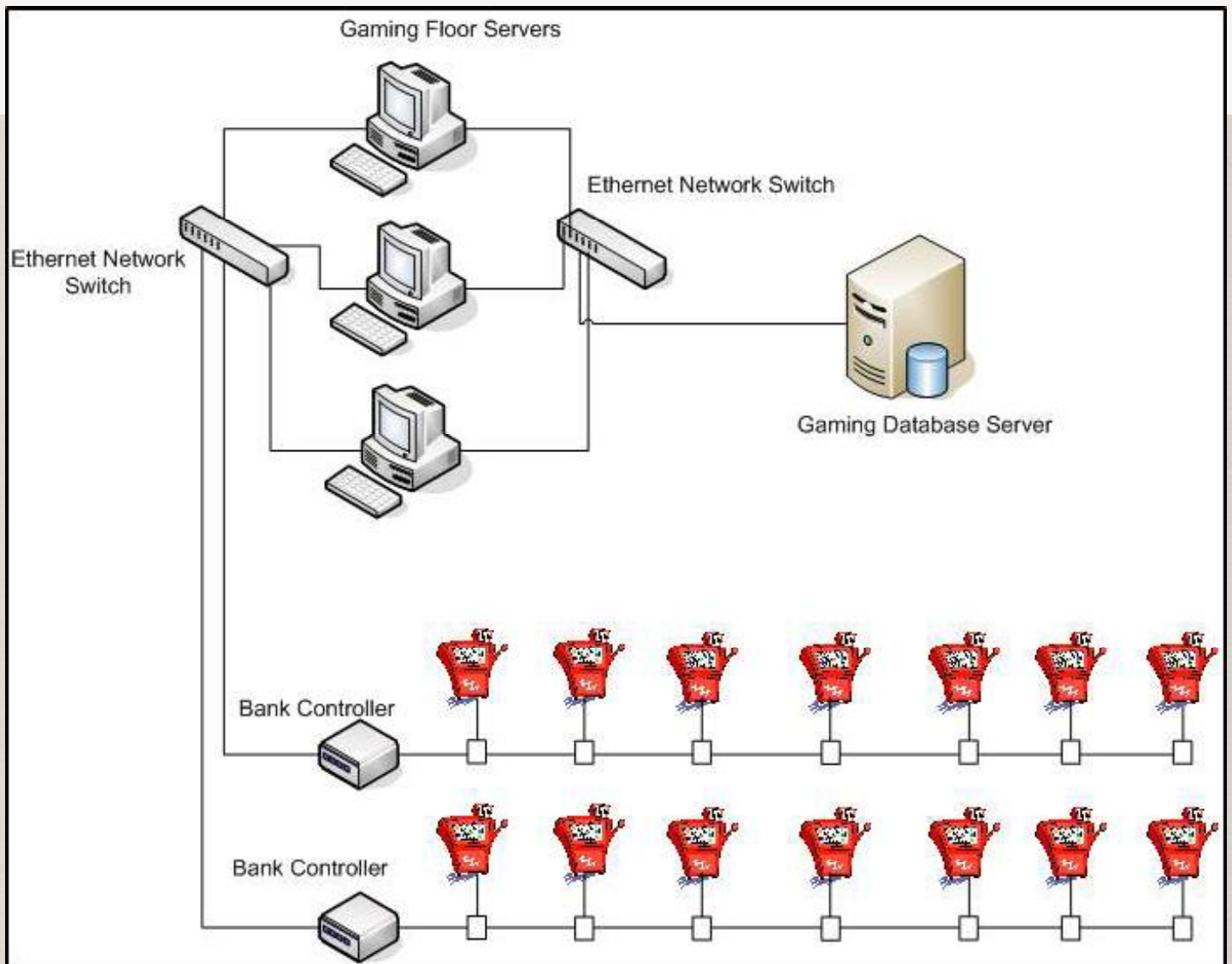
The ACE solution has been deployed internationally in Mexico, the Caribbean, United Kingdom, Asia and Africa. Further to this ACE is an independent gaming systems vendor with no affiliations to gaming machine manufacturers. We have chosen to retain this vision as we believe that it provides us and our customers with a strategic advantage in that we are not restricted by game development strategies that other system vendors face as a result of being a division of a company whose main focus is the development of gaming machines.

CARDS & BALANCES

All values and card balances are held within the database in an encrypted format. On card insertion communications are initiated between the EGM and the ACE system, the ACE system is interrogated for the current card value and once decrypted credits are downloaded to the EGM.

ACE also supports *CARDLESS* gaming where play is initiated by inserting notes into a Bill validator.

SECURE, RELIABLE AND SCALABLE NETWORKS



01

In order to offer venues reliable yet scalable floor network solutions ACE provides an embedded Bank controller which takes the secure data communicated by the slot bank network and passes it through a bank controller onto an industry standard Ethernet network.

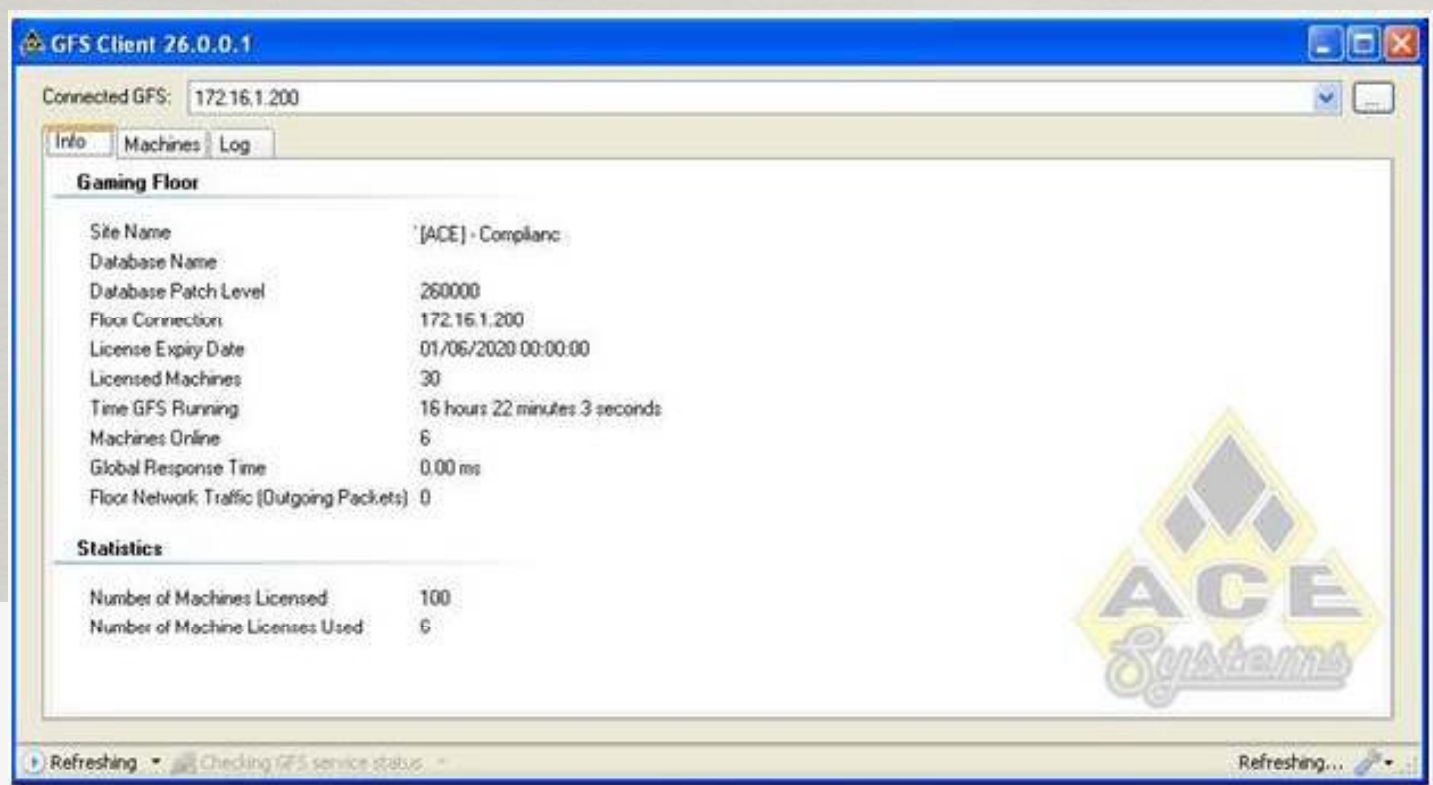
02

The bank controllers connect to a gaming floor server (GFS) using TCP /IP. The GFS acts in a capacity of a DHCP server issuing IP addresses from a pre-defined pool to the bank controllers.

- 03 Dynamic load balancing distributes the load of real-time communication packets between several Gaming Floor Servers which does not only contribute to a more robust online network but also provides a failover solution.

Dynamic load balancing is provided over the network as the bank controllers connect, communicate and analyse load sharing across the gaming floor. The net result is a floor of controllers averaged across the number of GFSs.

- 04 Should a Gaming Floor Server fail, or need to be decommissioned for maintenance the Bank Controllers will automatically failover and connect to the next available Gaming Floor Server, providing operators with peace of mind that they have a fully redundant gaming floor.



PLAYER BENEFITS



Deploying the ACE system in your venue will enhance the players experience through:

- Innovative Reward Programs
- Standard and Mystery Jackpots
- Mystery Jackpots filtered by Member Grade
- Mystery Jackpots filtered by Member Classifications
- Cashback Awards at the Gaming Machine
- Raffle Tickets
- Prizes
- Secure Coinless Play
- Recognition through the Membership Program at all customer touch points, including the Cashdesk and Tables.



African Casino Equipment Suppliers

18 Monte Carlo Crescent, Kyalami Business Park,
South Africa

Tel: (27) 11 514 5000
Email: support@aces.co.za
www.aces.co.za

